



# **50 ИЗБРАННЫХ**

**РУССКИХ И УКРАИНСКИХ НАРОДНЫХ МЕЛОДИЙ**

**Редакция для блокфлейты  
Евгения Шилина**



## 1. То не ветер ветку клонит

Am Dm Am E7 Am Am Dm Am E7

Am A7 Dm G7 C Dm Am

## 2. Ах, ты ноченька

E7 Am

Am E7 Am Am Dm

Am E7 Am C F C Dm Am Dm Am Dm6

## 3. Утушка луговая

Am E7 Am

Bm F#7

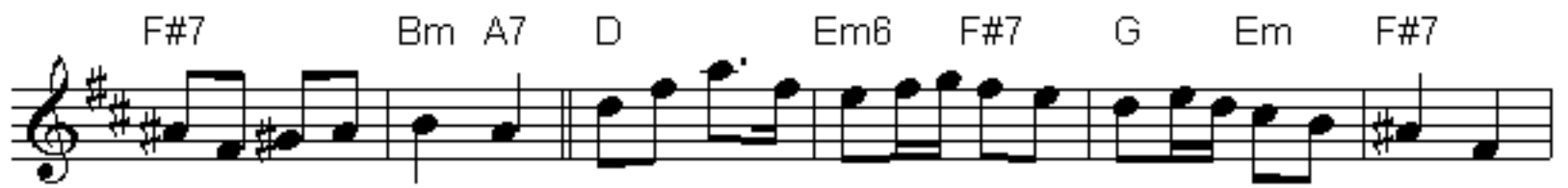
Bm F#7 Bm F#m Bm

F#m C#7 F#m Bm

F#m C#7 F#m

## 4. Вдоль по улице метелица метёт

F#7 Bm Em6 F#7 Bm Em6 Bm



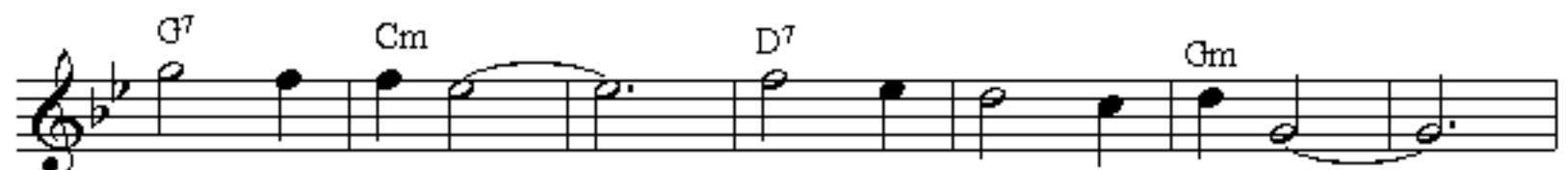
### 5. Я на камушке сижу



### 6. По улице мостовой



### 7. Тонкая рябина





### 8. По диким степям Забайкалья



### 9. Хас-Булат удалой



### 10. Уж ты мой сад



## 11. Позарастали стёжки-дорожки

Musical score for 'Позарастали стёжки-дорожки' in G major, 3/4 time. The score consists of three staves of music. The first staff has a treble clef, a key signature of one sharp (F#), and a 3/4 time signature. The notes are G4, A4, B4, C5, B4, A4, G4, F#4, G4, A4, B4, C5. Chords above are Em, F#7, Em. The second staff continues with notes G4, A4, B4, C5, B4, A4, G4, F#4, G4, A4, B4, C5. Chords above are Em, F#7, Em, B7, Em. The third staff continues with notes G4, A4, B4, C5, B4, A4, G4, F#4, G4, A4, B4, C5. Chords above are A7, D, Em, F#7, Em. The piece ends with a double bar line and repeat dots.

## 12. Ах, ты степь широкая

Musical score for 'Ах, ты степь широкая' in C minor, 3/4 time. The score consists of three staves of music. The first staff has a treble clef, a key signature of two flats (Bb, Eb), and a 3/4 time signature. The notes are G4, Ab4, Bb4, C5, Bb4, Ab4, G4, F4, G4, Ab4, Bb4, C5. Chords above are Gm, Cm, Gm, Cm, Gm. The second staff continues with notes G4, Ab4, Bb4, C5, Bb4, Ab4, G4, F4, G4, Ab4, Bb4, C5. Chords above are Gm, Cm, Gm, F, Cm, Gm, Cm, Gm. The third staff continues with notes G4, Ab4, Bb4, C5, Bb4, Ab4, G4, F4, G4, Ab4, Bb4, C5. Chords above are Cm, D7, Gm. The piece ends with a double bar line and repeat dots.

## 13. Отрада

Musical score for 'Отрада' in C minor, 3/4 time. The score consists of four staves of music. The first staff has a treble clef, a key signature of two flats (Bb, Eb), and a 3/4 time signature. The notes are G4, Ab4, Bb4, C5, Bb4, Ab4, G4, F4, G4, Ab4, Bb4, C5. Chords above are Gm, D7. The second staff continues with notes G4, Ab4, Bb4, C5, Bb4, Ab4, G4, F4, G4, Ab4, Bb4, C5. Chords above are D7, Gm, D7, Eb. The third staff continues with notes G4, Ab4, Bb4, C5, Bb4, Ab4, G4, F4, G4, Ab4, Bb4, C5. Chords above are G7, Cm, Gm. The fourth staff continues with notes G4, Ab4, Bb4, C5, Bb4, Ab4, G4, F4, G4, Ab4, Bb4, C5. Chords above are D7, Gm. The piece ends with a double bar line and repeat dots.

## 14. На сопках Маньчжурии

Musical score for "На сопках Маньчжурии" (On the Manchurian Hills). The piece is in 3/4 time and G minor. The score consists of eight staves of music. The first staff begins with a treble clef, a key signature of two flats, and a 3/4 time signature. The melody is written in a single line with various chords indicated above the notes. The chords include Gm, D, D7, Gm, Gm, D7, Cm, Gm, D7, Gm, D7, Gm, F, Bb, Gm, Cm, D7, Gm, G7, Cm, F, F, D7, Gm, Cm, Gm, D7, and Gm. The piece concludes with a double bar line.

## 15. В низенькой светёлке

Musical score for "В низенькой светёлке" (In the Little Light). The piece is in 6/8 time and G major. The score consists of a single staff of music. The first staff begins with a treble clef, a key signature of one sharp, and a 6/8 time signature. The melody is written in a single line with various chords indicated above the notes. The chords include G, D7, G, and G. The piece concludes with a double bar line.



## 16. Славное море, священный Байкал

F B<sup>0</sup> B<sup>b</sup> F C<sup>7</sup>



## 17. Среди долины ровныя

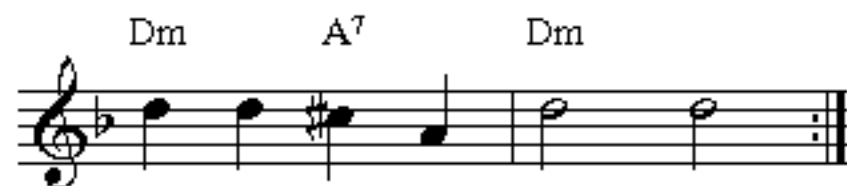


## 18. Что ты жадно глядишь на дорогу





## 19. Чернобровый, черноглазый



## 20. Светит месяц





## 21. Ах, ты степь широкая

Dm Am E7 Am F C Dm Am  
 C Dm Am B7 F Am  
 Dm Am B7 Am

The musical score for 'Ах, ты степь широкая' consists of three staves of music in treble clef. The first staff starts in 4/4 time, changes to 3/4, and then to 2/4. The second staff continues in 3/4 and 2/4. The third staff is in 3/4 and 4/4 time. The music features a mix of eighth and quarter notes, with some rests and a repeat sign at the end of the third staff.

## 22. Ой, то не вечер

Am B7 Am  
 G7 C G C  
 C B7 Am Dm B7 Am

The musical score for 'Ой, то не вечер' consists of three staves of music in treble clef, all in 4/4 time. The first staff has a half note followed by quarter notes and a half note with a sharp. The second staff has quarter notes and half notes. The third staff has quarter notes, half notes, and a whole note with a sharp. The music includes a repeat sign and a key signature change to one sharp at the end.

## 23. Вот мчится тройка

Em B7 Em C  
 B7 Em E7  
 Am Em B7 Em

The musical score for 'Вот мчится тройка' consists of three staves of music in treble clef, all in 4/4 time with a key signature of one sharp. The first staff has quarter notes and eighth notes. The second staff has quarter notes and eighth notes. The third staff has quarter notes and eighth notes. The music includes a repeat sign and a key signature change to one sharp at the end.

## 24. Волга-реченька

9

Musical score for 'Волга-реченька' in G major, 4/4 time. The score consists of four staves of music. The first staff begins with a repeat sign. Chord symbols are placed above the notes: Em, Am, B7, Em, Am, Em, B7.

## 25. Прощай, Радость

Musical score for 'Прощай, Радость' in G major, 3/4 time. The score consists of four staves of music. The first staff begins with a repeat sign. Chord symbols are placed above the notes: Am, Dm, Am, C, G, F, B7, C, Em, F, Am, Dm, Am, C, G, F, E7. There are triplets marked with a '3' over the notes.

## 26. Коробушка

Musical score for 'Коробушка' in G major, 4/4 time. The score consists of two staves of music. The first staff begins with a repeat sign. Chord symbols are placed above the notes: Am, E7, Am, Dm, Am, E7, Am.

## 27. Ах, ты душечка

Musical score for "Ах, ты душечка" in G major, 5/4 time. The score consists of two staves. The first staff has a first ending bracket over the final three measures. The second staff has a second ending bracket over the final three measures. Chords are indicated above the notes.

Chords: B7, Em, B7, Em, Dm, Am, E7, Am, D7, G, C, Am, B7, Em, B7, D7, G, Am7, Em, B7, Em.

## 28. Степь да степь кругом

Musical score for "Степь да степь кругом" in G major, 3/4 time. The score consists of three staves. The first staff has a slur over the last two notes. The second staff has a slur over the last two notes. The third staff has a slur over the last two notes. Chords are indicated above the notes.

Chords: D, B7, Em, G, D, A7, D.

## 29. Из-за острова на стрежень

Musical score for "Из-за острова на стрежень" in G major, 4/4 time. The score consists of two staves. The first staff has a slur over the last two notes. The second staff has a slur over the last two notes. Chords are indicated above the notes.

Chords: C, G7, C, F, C, G7.

## 30. Есть на Волге утёс

Musical score for "Есть на Волге утёс" in G major, 2/4 and 3/4 time. The score consists of three staves. The first staff has a slur over the last two notes. The second staff has a slur over the last two notes. The third staff has a first ending bracket over the final three measures. Chords are indicated above the notes.

Chords: C, F#m, C#7, F#m, A, E7, A, F#m, Em, C#7, F#m, C#7, D, A, D, E7, A, F#m, Em, C#7.

2. Bm C#7 F#m

### 31. Однозвучно звенит колокольчик

### 32. Над полями, да над чистыми

### 33. Весной Волга разольётся

Musical score for "Весной Волга разольётся" in G major, 2/4 time. The score consists of four staves of music. The first staff begins with a treble clef, a key signature of one sharp (F#), and a 2/4 time signature. The melody is written in a simple, folk-like style. Chords are indicated above the staff: G, Am, D7, G, Am, D7, G. The second staff continues the melody with chords Am, D7, G. The third staff has chords D7, G, D7, G, D7. The fourth staff has chords G, D7, G and ends with a double bar line and repeat dots.

### 34. Катюша

Musical score for "Катюша" in A minor, 2/4 time. The score consists of four staves of music. The first staff begins with a treble clef, a key signature of no sharps or flats, and a 2/4 time signature. The melody is written in a simple, folk-like style. Chords are indicated above the staff: Am, E, E7. The second staff has chords Am, Am, A7, Dm, Am, Dm, Am. The third staff has chords E7, Am, Am, A7, Dm, Am, Dm. The fourth staff has chords Am, E7, Am and ends with a double bar line and repeat dots.

### 35. Варяг

Musical score for "Варяг" in G major, 4/4 time. The score consists of two staves of music. The first staff begins with a treble clef, a key signature of one sharp (F#), and a 4/4 time signature. The melody is written in a simple, folk-like style. Chords are indicated above the staff: G, D7, G. The second staff has chords E7, Am, D7, G and ends with a double bar line and repeat dots.

### 36. Летят утки

D A D A E<sup>7</sup>

A D A E<sup>7</sup>

A D A E<sup>7</sup>

A

### 37. Не брани меня, родная

Gm

Cm D<sup>7</sup> Gm Cm

D<sup>7</sup> Gm F<sup>7</sup> B<sup>b</sup> F<sup>7</sup>

B<sup>b</sup> D<sup>7</sup> Gm Cm Gm Gm D<sup>7</sup>

### 38. Не корите, меня, не браните

Cm G<sup>7</sup> Cm B<sup>b</sup>

Chord symbols: B<sup>b</sup>7, E<sup>b</sup>, Cm, Fm, G<sup>7</sup>, Cm, G<sup>7</sup>, Cm

### 39. Не слышно шуму городского

Chord symbols: G, D, G, D, G, Am, C, D<sup>7</sup>, G, Am, G, D<sup>7</sup>, G

### 40. Взяв би я бандуру

Chord symbols: E, Am

Chord symbols: E<sup>7</sup>, Am, Dm, Am, E<sup>7</sup>, Am

## 41. Дивлюсь я на небо

Chord progression for "Дивлюсь я на небо":

Staff 1: Gm D7 Gm Bb

Staff 2: F F7 Bb D7 Gm D7

Staff 3: Bb Cm Gm D7 Gm

## 42. Мисяц на неби

Chord progression for "Мисяц на неби":

Staff 1: Am E Am E7

Staff 2: Am F A7 Dm

Staff 3: E7 Am

## 43. Нич яка мисячна

Chord progression for "Нич яка мисячна":

Staff 1: Am Dm E7

Staff 2: Am Am Dm

Staff 3: E7 Am



## 44. Цвите терен

Bm F#7 Bm F#7 Bm A<sup>7</sup>

D A<sup>7</sup> D Bm

F#<sup>7</sup> Bm

## 45. Чорние брови

Em B<sup>7</sup> Em D

D<sup>7</sup> G B<sup>7</sup> C<sup>6</sup>

A<sup>m</sup> Em B<sup>7</sup> Em

## 46. Ой при лужку, при лужке

Gm Cm Gm B<sup>b</sup> F<sup>7</sup> Gm

B<sup>b</sup> F Gm Cm B<sup>b</sup> D<sup>7</sup> Gm F

B<sup>b</sup> F Gm Cm

B<sup>b</sup> D<sup>7</sup> Gm

## 47. Мы на лодочке катались

Musical score for "Мы на лодочке катались" (We were riding on a little boat). The score is written in G minor, 3/4 time, and consists of three staves of music. The first staff begins with a repeat sign. Chords are indicated above the notes: Gm, Cm, D7, Gm, D7. The second staff continues the melody with chords Gm, Cm, D7, Gm, Cm. The third staff concludes the piece with chords Gm, Cm, D7, Eb, G7, Cm, F7, Bb, Cm, Gm, D7.

First staff of the musical score for "Перевоз Дуня держала" (The ferry Dunya was holding). It is in G minor, 3/4 time, and consists of a single line of music with a repeat sign. The chord Gm is indicated above the notes.

## 48. Перевоз Дуня держала

Second staff of the musical score for "Перевоз Дуня держала". It is in G major, 2/4 time, and consists of a single line of music. Chords G, C, G, C, G are indicated above the notes.

Third staff of the musical score for "Перевоз Дуня держала". It is in G major, 2/4 time, and consists of a single line of music. Chords D7, G, G, C, G, C, G, D7, G, D7 are indicated above the notes.

Fourth staff of the musical score for "Перевоз Дуня держала". It is in G major, 2/4 time, and consists of a single line of music. Chords G, C, D7, D7, G, Am, G are indicated above the notes.

Fifth staff of the musical score for "Перевоз Дуня держала". It is in G major, 2/4 time, and consists of a single line of music. Chords D7, G are indicated above the notes.

## 49. Посею лебеду на берегу

First staff of the musical score for "Посею лебеду на берегу" (I will sow swans on the bank). It is in C major, 3/4 time, and consists of a single line of music. Chords C, G, C, G, C are indicated above the notes.

Second staff of the musical score for "Посею лебеду на берегу". It is in C major, 3/4 time, and consists of a single line of music. Chords Am, E7, Am, E7, Am, Dm, Am, E7, Am are indicated above the notes.

## 50. Чёрный ворон

Am F Am A<sup>7</sup> Dm

C F G<sup>7</sup> Am E<sup>7</sup> Am

C F G<sup>7</sup> Am E<sup>7</sup> Am

## 51. Пойду ль я

C G<sup>7</sup> C G<sup>7</sup> C

Dm G<sup>7</sup> C Dm G<sup>7</sup> C

## 52. Ой, дивчина, шумит гай

G D<sup>7</sup> G

D<sup>7</sup> G

## 53. Ой, за гаем, гаем

G C G C G

D<sup>7</sup> G C G D<sup>7</sup> G

## 54. Я на горку шла

G D<sup>7</sup> G D<sup>7</sup> G D<sup>7</sup> G D A<sup>7</sup> D

G D A<sup>7</sup> D D A<sup>7</sup> D G D A<sup>7</sup> D

The first system shows the beginning of the piece in G major, 2/4 time. It starts with a repeat sign. The melody is written on a treble clef staff. The second system continues the melody and ends with a repeat sign.

## 55. У ворот, ворот

Bm Bm Bm Bm Bm Bm Bm Bm Bm Bm

Bm Bm Bm Bm Bm Bm Bm Bm

Bm Bm Bm Bm Bm Bm

The piece is in B minor, 2/4 time. It consists of three systems of musical notation on a treble clef staff, all featuring a steady eighth-note accompaniment. The first system has a repeat sign at the end. The second system continues the pattern. The third system concludes with a final double bar line.

## 56. Во поле берёза стояла

Am C D F E<sup>7</sup> Am Am C D F E<sup>7</sup> Am E<sup>7</sup>

Dm F E<sup>7</sup> Am E<sup>7</sup> Dm F E<sup>7</sup> Am

The piece is in A minor, 2/4 time. It consists of two systems of musical notation on a treble clef staff. The first system has a repeat sign at the end. The second system concludes with a final double bar line.

## 57. По Дону гуляет

C G<sup>7</sup> C

F C G<sup>7</sup> C

F C G<sup>7</sup> C

The piece is in C major, 3/4 time. It consists of three systems of musical notation on a treble clef staff. The first system has a repeat sign at the beginning. The second system continues the melody. The third system concludes with a final double bar line.