

Евг. Шилин

# Школа игры на блокфлейте



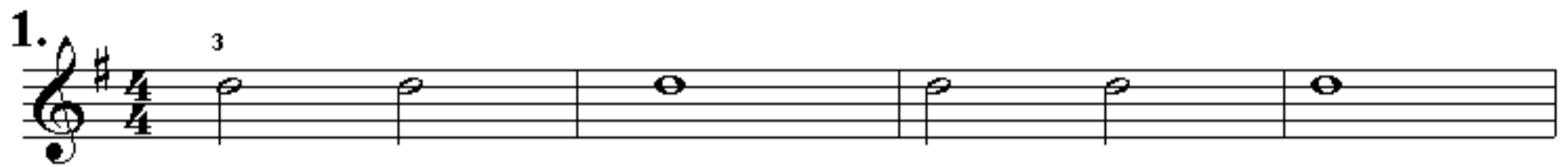
Часть 1  
Для начинающих  
Сопрано

2008

# БЛОКФЛЕЙТА СОТРАНО

## Начальные упражнения.

1.



2.



3.



4.



5.



6.

7.

8.

9.

10.

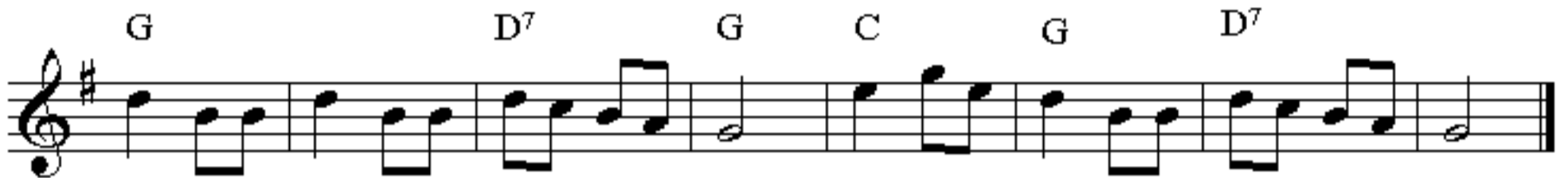
11.

# Гамма Соль-мажор



## Лёгкие пьесы.

### 1. ЁЛОЧКА



### 2. МАЛЕНЬКАЯ ТПОЛЬКА



### 3. INSY, WINSY, SPIDER



### 4. OLD MACDONALD HAD



## 5. HAPPY BIRTHDAY TO YOU

Musical notation for "Happy Birthday to You" in 3/4 time. The melody is written on a treble clef staff. The key signature is C major. The first line contains the first six measures, and the second line contains the last two measures. Chords are indicated above the notes: C, G7, C, C7, F, C, G7, C.

## 6. DOWN IN DEMERARA

Musical notation for "Down in Demerara" in 4/4 time. The melody is written on a treble clef staff. The key signature is C major. The first line contains the first four measures, the second line contains the next four measures, and the third line contains the final two measures. Chords are indicated above the notes: C, G7, C, C, G7, C, G7, C.

## 7. CHILDREN'S SONG

Musical notation for "Children's Song" in 2/4 time. The melody is written on a treble clef staff. The key signature is A major (two sharps). The first line contains the first six measures, and the second line contains the last two measures. Chords are indicated above the notes: A, D, A, D, A, E7, A, A, D, A, E7, A, D, E7, A.

## 8. CLEMENTINE

Musical notation for "Clementine" in 3/4 time. The melody is written on a treble clef staff. The key signature is C major. The first line contains the first six measures, and the second line contains the last two measures. Chords are indicated above the notes: C, G7, C, G, G7, C.

## 9. СВЕТИТ МЕСЯЦ

5

Musical score for "СВЕТИТ МЕСЯЦ" in G major, 4/4 time. The score consists of four staves of music. The first staff begins with a treble clef, a key signature of one sharp (F#), and a 4/4 time signature. The melody is written in a simple, folk-like style with many eighth and quarter notes. Chords are indicated above the staff: C, G, C, G. The second staff continues the melody with chords D, G, D, G. The third staff has chords C, G, C, G7. The fourth staff has chords D, G, D, D7, G. The piece ends with a double bar line and a repeat sign.

## 10. ПЕРЕТЁЛОЧКА

Musical score for "ПЕРЕТЁЛОЧКА" in G minor, 2/4 time. The score consists of two staves of music. The first staff begins with a treble clef, a key signature of two flats (Bb, F), and a 2/4 time signature. The melody is simple and rhythmic. Chords are indicated above the staff: Dm, Gm, A7, Dm. The second staff continues the melody with chords Gm, Bb7, A7, Dm. The piece ends with a double bar line and a repeat sign.

## 11. МЫ ИДЁМ ПО УРУГВАЮ

Musical score for "МЫ ИДЁМ ПО УРУГВАЮ" in G major, 4/4 time. The score consists of two staves of music. The first staff begins with a treble clef, a key signature of one sharp (F#), and a 4/4 time signature. The melody is simple and rhythmic. Chords are indicated above the staff: Am, E7. The second staff continues the melody with chords E7, Am. The piece ends with a double bar line and a repeat sign.

## 12. ВО ПОЛЕ БЕРЁЗА СТОЯЛА

Musical score for "ВО ПОЛЕ БЕРЁЗА СТОЯЛА" in G major, 2/4 time. The score consists of two staves of music. The first staff begins with a treble clef, a key signature of one sharp (F#), and a 2/4 time signature. The melody is simple and rhythmic. Chords are indicated above the staff: Am, C, D, F, E7, Am, Am, C, D, F, E7, Am. The second staff continues the melody with chords E7, D, F, E7, Am, E7, D, F, E7, Am. The piece ends with a double bar line and a repeat sign.

## 13. ПО ДОНУ ГУЛЯЕТ

Musical score for "13. ПО ДОНУ ГУЛЯЕТ" in D major, 3/4 time. The score consists of two staves. The first staff contains the melody with chords D, A7, D, G, and D. The second staff contains the accompaniment with chords A7, D, G, D, A7, and D.

## 14. ПОЛЬКА

Musical score for "14. ПОЛЬКА" in A minor, 2/4 time. The score consists of two staves. The first staff contains the melody with chords Am, Dm, E7, and Am. The second staff contains the accompaniment with chords Am, Dm, E7, and Am.

## 15. АВГУСТИН

Musical score for "15. АВГУСТИН" in D major, 3/4 time. The score consists of three staves. The first staff contains the melody with chords G, D, and G. The second staff contains the accompaniment with chords D7, G, D7, G, and D7. The third staff contains the accompaniment with chords G, D7, and G.

## 16. МОЙ КОСТЁР

Musical score for "16. МОЙ КОСТЁР" in A minor, 3/8 time. The score consists of two staves. The first staff contains the melody with chords Am, Dm6, E7, and Am. The second staff contains the accompaniment with chords Am, A7, Dm, Am, E7, and Am.