

Е. Шилин

# ШКОЛА ИГРЫ на блокфлейте



Часть 2

Ежедневные упражнения

Сопрано

2008

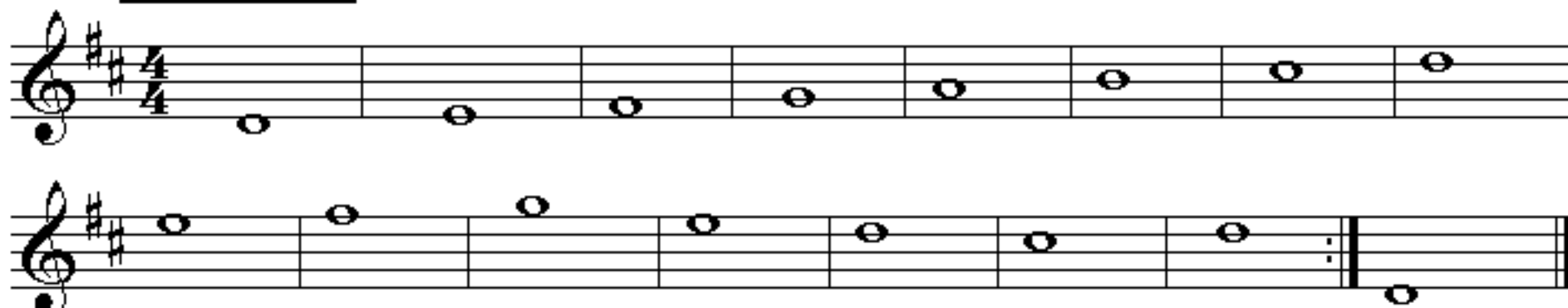
# Ежедневные упражнения для блокфлейты СОПРАНО

Тональности Ре-мажор, Ре-минор.

Основная работа должна вестись над красивым, наполненным звуком. Не спешите, играйте упражнения в умеренном темпе. Пьесы специально вставлены между упражнениями, чтобы вы отдыхали от технической работы и время от времени окунались в художественный материал. Главная задача-играть красивым звуком!

## Exercises 1

Е.Шилин



Каждое упражнение нужно повторить несколько (4-6) раз. Чтобы закончить любое из этих упражнений, достаточно в конце сыграть ноту Ре.



# Однозвучно звенит колокольчик

Русская

Musical notation for the song "Однозвучно звенит колокольчик" in D major, 4/4 time. The notation consists of three staves of music. The first staff begins with a treble clef, a key signature of two sharps (F# and C#), and a 4/4 time signature. The melody starts with a quarter rest, followed by a quarter note G4, a quarter note A4, and a quarter note B4. A double bar line with repeat dots follows. The second staff continues the melody with a quarter note C#5, a quarter note B4, a quarter note A4, and a quarter note G4. The third staff concludes the piece with a quarter note F#4, a quarter note E4, and a quarter note D4. Chords are indicated above the notes: D (above G4), D7 (above A4), G (above B4), G (above C#5), D (above B4), A7 (above A4), and D (above G4).

## Exercises 2

Six staves of guitar exercises in D major, 4/4 time. Each staff contains a different rhythmic or technical exercise. The first staff features a sequence of eighth-note patterns: two eighth notes, followed by a quarter note, then a quarter note, and finally a quarter note with a sixteenth-note triplet. The second staff shows a sequence of eighth-note patterns: two eighth notes, followed by a quarter note, then a quarter note, and finally a quarter note with a sixteenth-note triplet. The third staff features a sequence of eighth-note patterns: two eighth notes, followed by a quarter note, then a quarter note, and finally a quarter note with a sixteenth-note triplet. The fourth staff shows a sequence of eighth-note patterns: two eighth notes, followed by a quarter note, then a quarter note, and finally a quarter note with a sixteenth-note triplet. The fifth staff features a sequence of eighth-note patterns: two eighth notes, followed by a quarter note, then a quarter note, and finally a quarter note with a sixteenth-note triplet. The sixth staff shows a sequence of eighth-note patterns: two eighth notes, followed by a quarter note, then a quarter note, and finally a quarter note with a sixteenth-note triplet.

Three staves of musical notation in treble clef, key of D major (two sharps), and 3/4 time. The first staff contains a series of eighth-note patterns. The second staff continues with similar eighth-note patterns, including some beamed sixteenth notes. The third staff concludes with a final eighth-note pattern and a 3/4 time signature at the end.

Theme **Lullaby** J. Brahms

Four staves of musical notation in treble clef, key of D major, and 3/4 time. The first staff begins with a 3/4 time signature and contains a simple melody of quarter and eighth notes. The subsequent three staves continue the melody with various note values and rests.

Variation

Two staves of musical notation in treble clef, key of D major, and 3/4 time. The first staff starts with a repeat sign and contains a melody of quarter and eighth notes. The second staff continues the variation with similar rhythmic patterns.



**Exercises 3**



The first section of the page contains seven staves of musical notation. Each staff begins with a treble clef and a key signature of two sharps (F# and C#). The music consists of eighth and sixteenth notes, often beamed together in groups. There are several repeat signs (double bar lines with dots) throughout the section, indicating where the music should be repeated. The notation is clear and legible, with appropriate accidentals and dynamics markings.

**Exercises 4**

The second section of the page, titled "Exercises 4", consists of five staves of musical notation. Each staff begins with a treble clef and a key signature of two sharps (F# and C#). The music is characterized by the use of triplets, indicated by the number "3" above or below groups of three notes. The notes are primarily eighth and sixteenth notes, often beamed together. The exercises are designed to improve finger dexterity and timing through repetitive triplet patterns. The notation is clear and legible, with appropriate accidentals and dynamics markings.

Four staves of musical notation for guitar, featuring triplets of eighth notes. The key signature is D major (two sharps). The first two staves each contain two measures of triplets. The third staff contains two measures of triplets, with the second measure having a triplet of eighth notes on a lower string. The fourth staff contains two measures of triplets, with the second measure having a triplet of eighth notes on a lower string.

## Над полями, да над чистыми

Five staves of musical notation for guitar with lyrics. The key signature is D major (two sharps) and the time signature is 2/4. The lyrics are: "Над полями, да над чистыми". The chord symbols are: D, E7, A7, D, D, Em, A7, D, G, Em, A7, D.

# Тональность Ре-минор

## Exercises 5

Six staves of musical exercises in D minor. Each staff contains a sequence of notes and rests, often with repeat signs, designed for technical practice on the guitar.

## Ах, ты ноченька

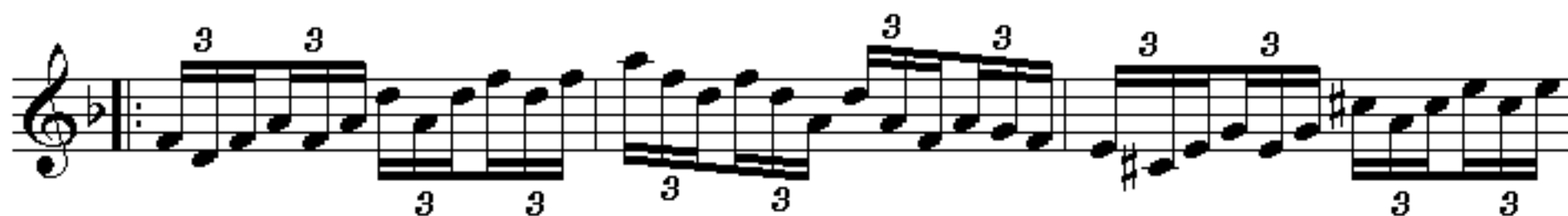
Русская

Three staves of musical notation for the Russian folk song "Ах, ты ноченька". The notation includes guitar chords and melodic lines.

Chords: Dm, A7, Dm, Gm, A7, Dm, F, C7, F, Gm, Dm, Dm, Gm, Dm, A7, Dm.



8 Exercises 6



# Tambourine

Ramo





**Exercises 7**



Seven staves of musical notation for guitar. The notation includes various rhythmic patterns such as eighth and sixteenth notes, often beamed together. There are several repeat signs and double bar lines throughout the piece, indicating specific sections or endings.

# Мелодия

Е. Шилин

Медленно, свободно

Three staves of musical notation for guitar. The first staff begins with a treble clef, a key signature of one flat (B-flat), and a 3/4 time signature. The tempo marking "Медленно, свободно" is placed above the first staff. Chord symbols are placed above the notes: Dm at the beginning and end of the first staff, A7 above the second staff, Gm above the third staff, and Dm above the fourth staff. The piece concludes with the word "Конец" (The End) written below the final note.

Dm A7

Dm Dm A7 Dm

Dm A7 Bb A7

Dm Dm A7 Dm